

Photographs by the author except the last picture, taken by an Australian friend.



1. AFTERNOON IN ULTAH—THE CASTLE'S "BACK-YARD" VIEW; THIS AWE-INSPIRING VIEW IS ALSO TO BE SEEN IN PICTURES 12 AND 16.



2. MY BALTIT NEIGHBORS' ROOFS, DOTTED WITH DRYING ALFALFA. THE PALACE OF THE MIR LIES ON THE DISTANT RIDGE BEYOND THE BARREN CEMETERY.

3. A FARMER OF BALTIT THRESHING BARLEY. HE HAS BORROWED CATTLE FOR THE PURPOSE, FOR NO ONE PERSON OWNS THIS MANY COWS IN HUNZA.

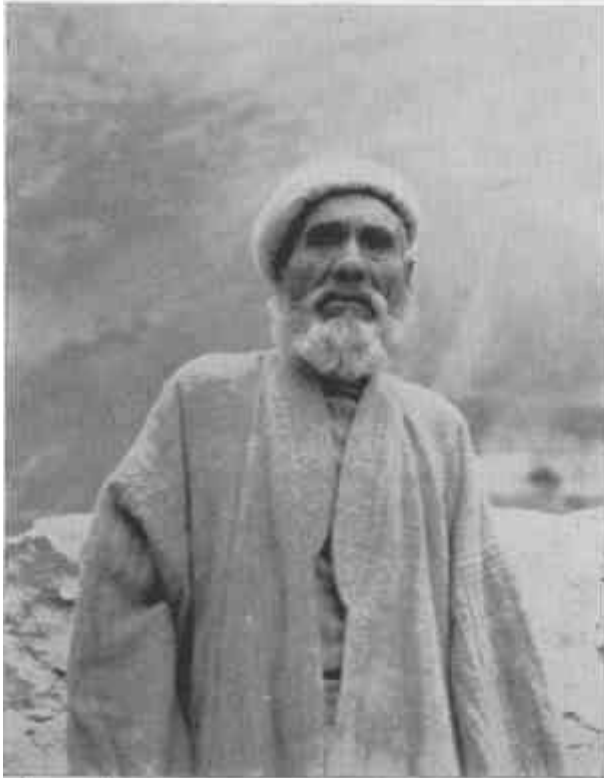




4. *Upper.* FACULTY OF THE AGHA KHAN'S MIDDLE SCHOOL, BALTI. THE BLACK-COATED GENTLEMAN IS BABU JAN, HEADMASTER AND MY BOYS' RELIGIOUS ADVISER. 5. *Lower.* THE MAIN ROOM OF A WELL-TO-DO HUNZA HOUSE. THE DECORATIONS ON THE BEAMS ARE DAURED ON WITH FLOUR-PASTE. GOAT-HAIR FLOOR MATS ARE POSSESSIONS OF THE WEALTHY.



6. THE MIR  
AND HIS COURT.  
THIS PORCH IS  
THE REGULAR  
COURTROOM.



7. A PATRIARCH OF  
KHAIBAR—BURHAN  
SHAH'S FATHER.

8. BUYAL SINGH,  
FATHER OF  
SHERIN BEG,  
WITH THE  
YOUNGEST SON  
OF THE FAMILY.



9. SHERIN BEG'S  
COUSIN BRINGS  
FIREWOOD FOR  
WINTER OUT OF  
THE MOUNTAINS  
FOR HIS HOUSE  
IN BALTIT.

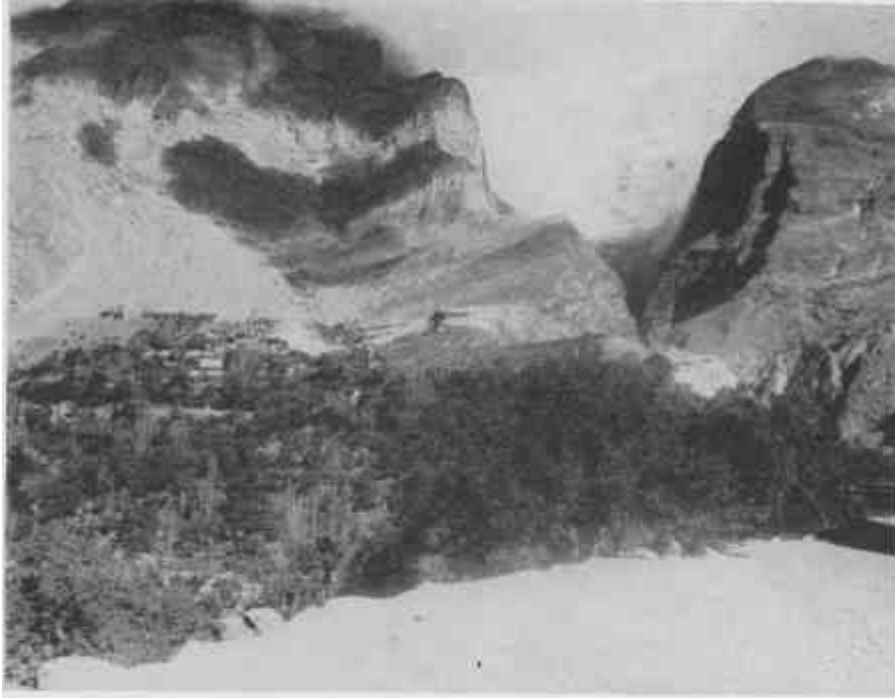




10. THE MAIN OASIS OF HUNZA, WITH WHITE-CAPPED RAKAFOSHI IN THE BACKGROUND; THE SUMMER VIEW FROM MY CASTLE.



11. DECEMBER CLOUDS ROLL INTO HUNZA, BRINGING SNOW TO THE EDGE OF THE UPPER FIELDS; IN THE VALLEY'S SETTLED REACHES SNOW RARELY FALLS.



12. MY CASTLE PERCHES ON A HILL AT THE MOUTH OF ULTAH NULLAH, WITH BALTIT SPREAD BELOW. THE TREES ARE APRICOT, MULBERRY, AND POPLAR.



13. MY STAFF, DECEMBER 1950. LEFT TO RIGHT: GOHOR HAYAT, SHERIN BEG, RACHMET ALLI, BURHAN SHAH, SULEIMAN KHAN, NASAR MOHAMMED, GHULAM RASUL, MULLAH MADUT, NUR-UD-DIN SHAH.



14. PASU LIES IN THE SHELTER OF KARUN PIR.





15. KARUN PIB. OF ALL THE MOUNTAINS, THE MOST MAGNIFICENT AND MOST INACCESSIBLE.



16. MY BACK YARD: ULTAH PEAK, 24,700 FEET, IS THE ROUND-TOPPED MOUNTAIN; THE NEEDLE IS BURELIMATING. 17. *Below.* HUNTING FOR VALUABLE MINERALS AT 14,000 FEET. BURHAN IS COOKING BREAKFAST. THE SMOOTH SLOPE IN THE UPPER LEFT IS ICE MANTLED WITH GRAVEL.





18. PEAKS OF THE GHUJAL, ABOVE KHAIBAR. 19. *Below.* BUTCHERING A SHEEP OUTSIDE THE COOK HUT ON THE ROOF OF THE OLD CASTLE. BURHAN IS INFLATING THE INTESTINE SO IT CAN BE CLEANED FOR TRIPE.





20. TWO GOITER PATIENTS, WITH A BOTTLE OF LUGOL'S IODINE FROM MY DISPENSARY. THEY WERE CURED WITHIN A MONTH. HUNZA IS ON THE VERGE OF A SERIOUS IODINE DEFICIENCY. 21. Below: SULEIMAN KHAN, AT THE LEFT, AND A FRIEND.



22. GOHOR HAYAT, AT THE LEFT, IN HIS WORKING CLOTHES, WITH A FRIEND. 23. Below. SHIRIN BEG IN HIS BEST WESTERN CLOTHES, WITH THE MODEL AIRPLANE HE MADE AND TIGER, THE MASCOT OF THE HANDICRAFT SCHOOL.



24. BURHAN SHAH.



25. MOHAMMED HAMID.



26. NASAR MOHAMMED.



27. RACHMET ALI.



28. MIRZA.



29. GHULAM RASUL.



30. NUR-UD-DIN SHAH.



31. THE AUTHOR, AT THE RIGHT, SNAPPED PAUSING WITH AN AUSTRALIAN COMPANION, ON THE SCREE OF AN ALMOST VERTICAL AND DANGEROUS ROCK WALL TO BE CLIMBED.